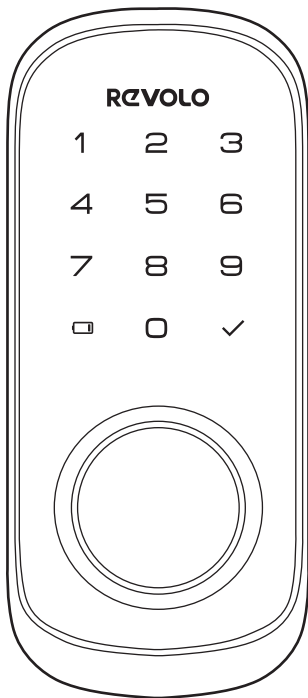




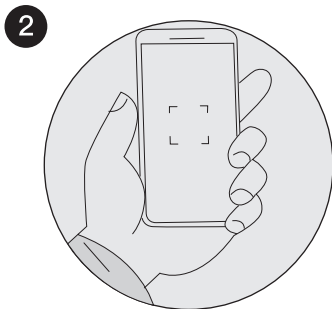
WiFi Smart Lock



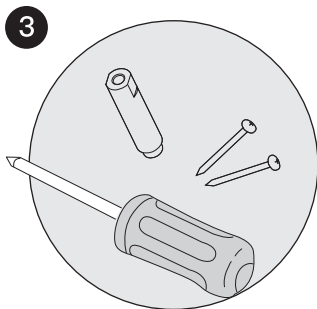
Quick Start Guide



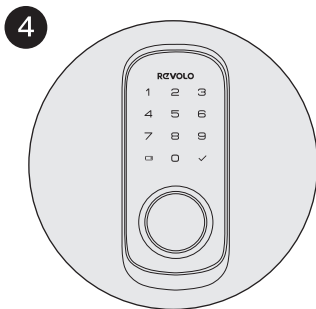
Download the Revolo app to begin setup.



Use your phone's camera to scan the QR code on your device.



Follow the instructions and replace your existing lock.



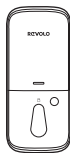
Calibrate your lock and you are done.

WHAT'S INCLUDED

a



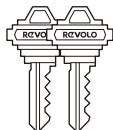
b



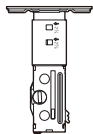
c



d



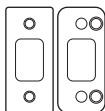
e



f



g



h



i



j



k



l



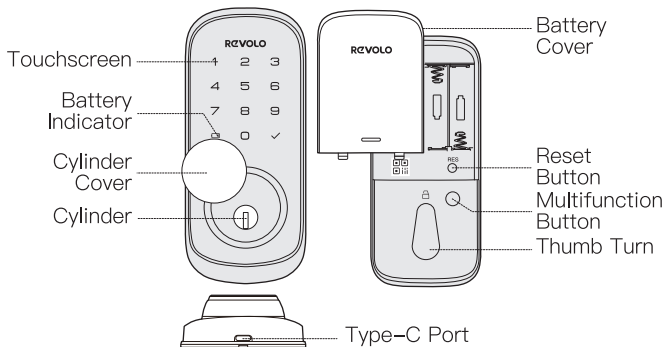
m



n



PRODUCT OVERVIEW



DEFINATION

Lock-Out

If you fail to unlock the door for 5 consecutive times using the **PIN Key**, your Lock will be shut-down for **3 Mins**.

One Touch Locking

Press and hold **Any key** on keypad for **2 Seconds** to lock the door.

Multi-function Button

Push and HOLD the **Multi-function button** on inside panel for **3 Seconds** to active **Privacy Mode**. This will disable all user PIN code access and APP control. **Privacy Mode** will be disable automatically after unlock the device with the **Thumb Turn** or **Mechanical Key**.

Reset Button

Push and HOLD the **Reset Button** for **5 seconds** to reset your device. After reset operation, the lock will be restored to factory default settings, all user credentials will be deleted.

Battery Indicator

The LED will turn **RED** if the battery level is lower than 20%. Please replace the batteries as soon as possible.

Type-C Port

Insert a **Type-C** cable into the Type-C port and use a portable battery(5V 2A) to power the Smart Lock. If your device's batteries are completely ran out.

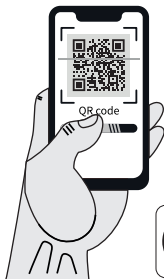
Starts Here!

DOWNLOAD REVOLO APP

Download the Revolo APP from the APP store or Google Play.



Scan the QR code to
download the Revolo APP





Note: The Revolo WiFi Smart Lock is embedded with an encryption chip. Bluetooth & WiFi data, and all user credentials are all encrypted, so user information is secure and cannot be accessed by others.

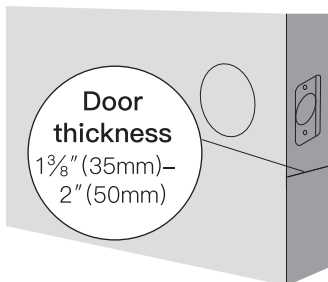
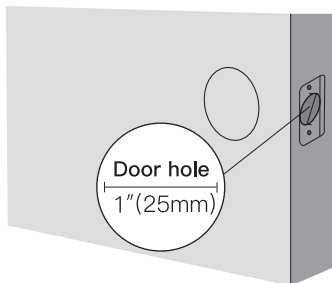
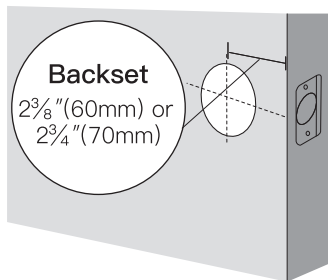
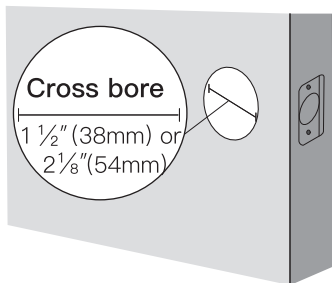
Sign up for a Revolo account , and add the Smart Lock to device list. Remove the battery cover and scan the QR code on the back of the device to view the Smart Lock installation video and setup instruction.

PREPARE DOOR FOR INSTALLATION

1. **Make sure that the following criteria are met so that the Smart Lock can be installed properly:**
 - ① Check the door status. Make sure the doorframe is aligned with the door.
 - ② There are no obstructions stuck in the doorframe.
 - ③ Leave enough space for the deadbolt to extend into the doorframe when the door is locked.

2. Check your door / frame dimensions to make sure that they fit the following measurements:

- ① The cross bore diameter $2\frac{1}{8}"$ (54 mm) or $1\frac{1}{2}"$ (38 mm)
- ② Backset $2\frac{3}{8}"$ (60 mm) or $2\frac{3}{4}"$ (70 mm)
- ③ Diameter of the door hole $1"$ (25 mm)
- ④ Door thickness $1\frac{3}{8}"$ (35 mm) – $2"$ (50 mm)



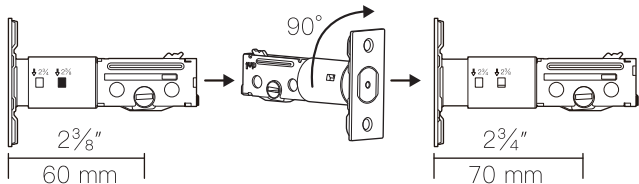
STEP 1

INSTALLING THE LATCH AND STRIKE

To install the deadbolt:

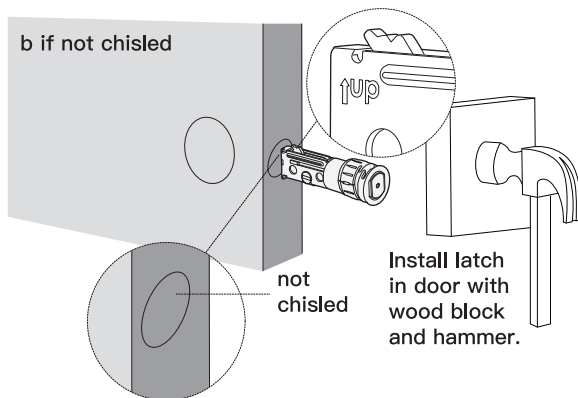
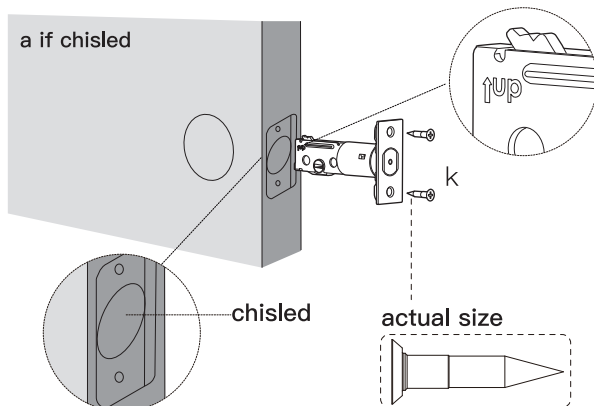
1. Measure your door's backset dimension: whether it is $2\frac{3}{4}$ " (70 mm) or $2\frac{3}{8}$ " (60 mm).
2. If your door's backset dimension is $2\frac{3}{8}$ " (60 mm), use the provided deadbolt to install.
If your door's backset is $2\frac{3}{4}$ " (70 mm). Rotate and pull the latch as shown the extend latch.

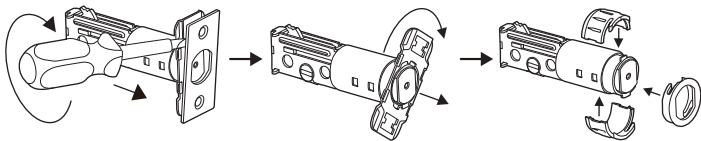
 The bolt must be in retracted(Unlocked) position when you are changing backset.



3. Insert the deadbolt into the doorframe and make sure the word "UP" faces up as indicated on the deadbolt.

4. Screw into the doorframe with a screwdriver (not provided).





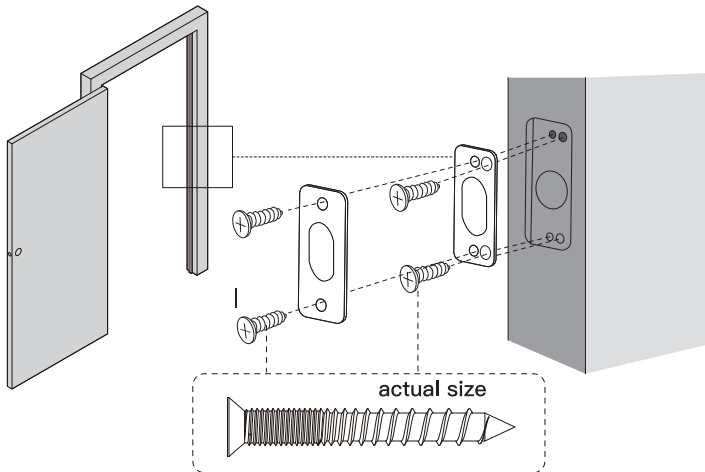
Use a flathead screwdriver to remove rectangular face from latch and install driver-in collar.

5. Install strike on the door frame.



IMPORTANT:

Make sure hole in door frame is drilled a minimum of 1" (25mm) deep.



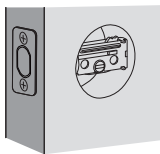
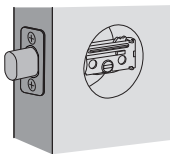
STEP 2

INSTALLING EXTERIOR ASSEMBLY



IMPORTANT:

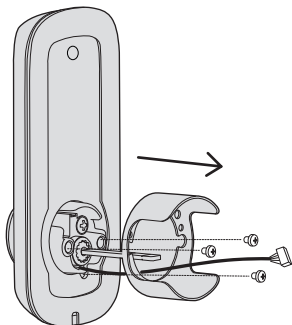
Before installation, make sure the latch is fully retracted (in the unlocked position).



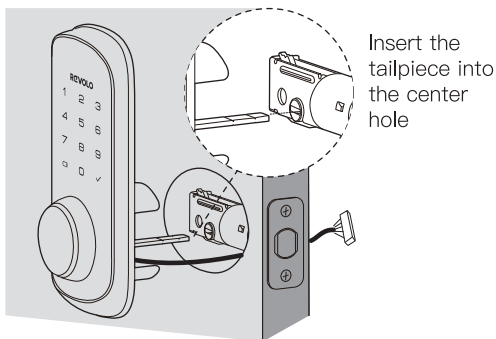
To install the exterior assembly:

1. Measure your cross bore dimension and determine the installation steps accordingly.

- If the diameter of your cross bore is $2\frac{1}{8}$ " (54mm), install directly.
- If you have a $1\frac{1}{2}$ " (38mm) crossbore, remove the spacer.



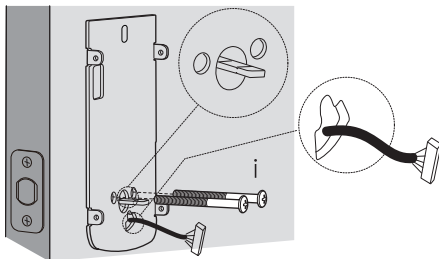
2. Route the cable connected on the exterior assembly under the deadbolt. Align the tailpiece with center hole of the deadbolt, and insert it into the center hole.



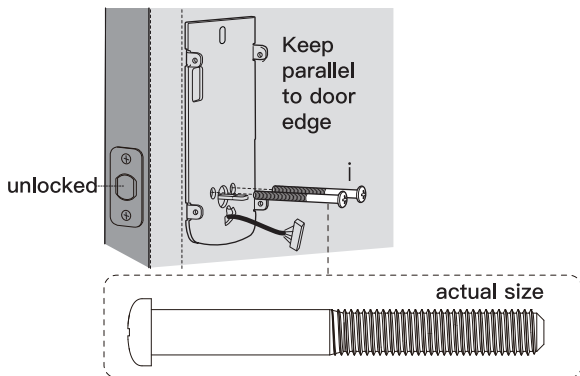
STEP 3

INSTALLING THE MOUNTING PLATE

1. Send the cable through the bottom slot in the mounting plate.



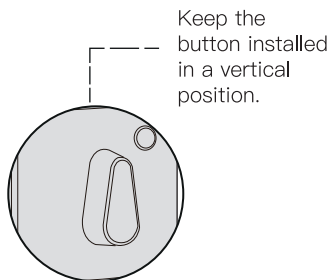
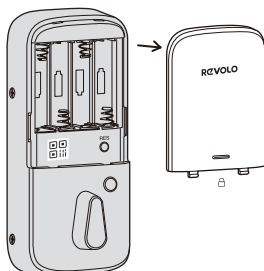
2. Secure the mounting plate with the supplied screws.



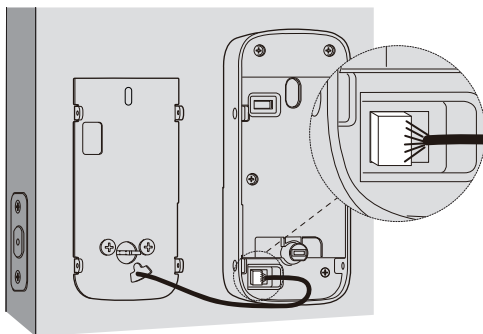
STEP 4

INSTALLING INTERIOR ASSEMBLY

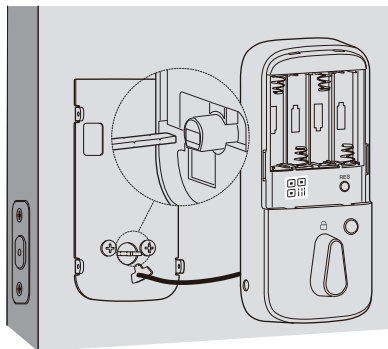
1. Remove the battery cover.



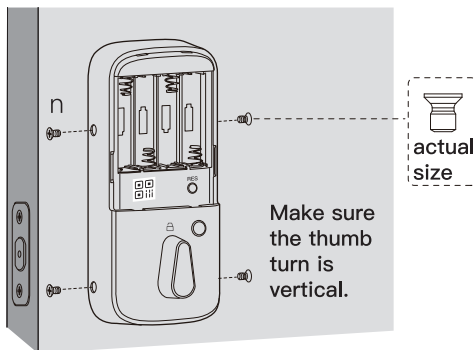
2. Connect the cable and ensure tight cable connection.



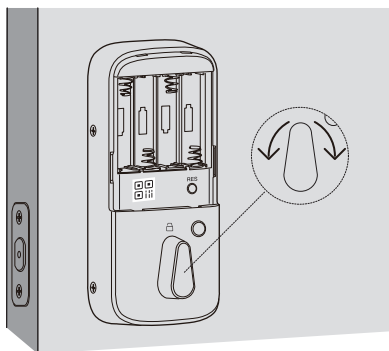
3. Rotate the thumb turn in vertical position and install the interior assembly.



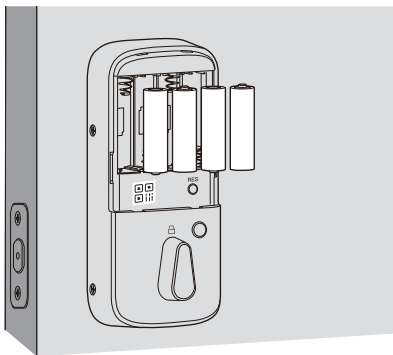
4. Secure the interior assembly with supplied screws.



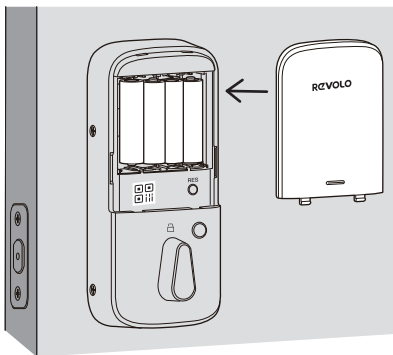
5. Test the thumb turn manually for smooth rotation. If thumb turn don't rotate, repeat 3, make sure the thumb turn in vertical position.



6. Insert four AA(1.5V) batteries into the battery compartment matching the polarity (+/-)indicated.



7. Scan the QR code to pair your device with your phone. Close battery cover.



STEP 5

PAIR YOUR PHONE WITH SMART LOCK AND SET UP YOUR SMART LOCK THROUGH APP



Note: The lock will not lock automatically before the setting is completed. To avoid being locked outside, pair your phone with the Smart Lock and set an access code unlocking the door.

To pair your phone with Smart Lock.

1. Scan the QR code on the back of the Smart Lock to get Bluetooth information of the Smart Lock. Follow the on-screen instructions to complete the setup.



Note:

- The first user that is paired is the only administrator, and can authorize other users to use the lock.
- Reset the device locally by press and HOLD the reset button for 5 seconds will not unpair the device from the administrator's APP.
- The administrator will not be able to setup and operate the device with Revolo App anymore after reset locally. Moreover the administrator has to unbind the Lock via Revolo App, so that the Lock can be paired or binded by other new users.

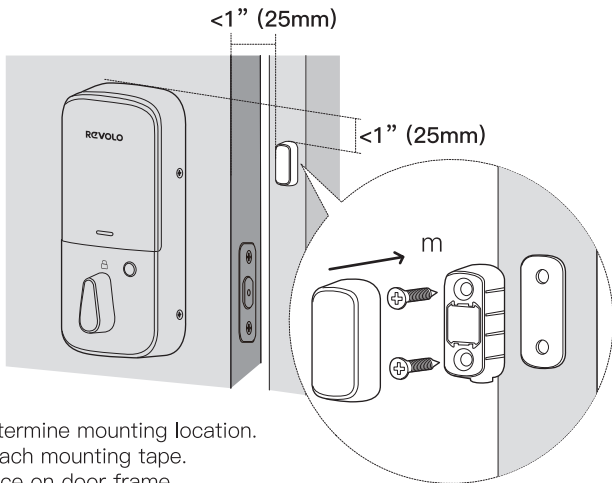
STEP 6

INSTALLING DOOR SENSOR



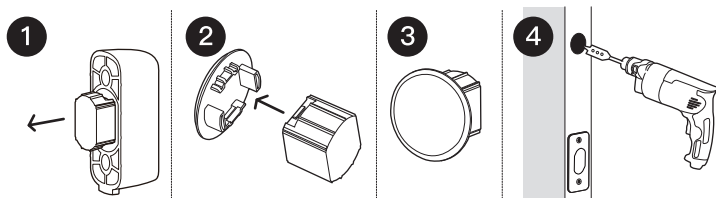
For optimal performance, Door Sensor should be mounted within 1" from the edge of your door, and within 1" from the top of the interior assembly.

Surface Mount

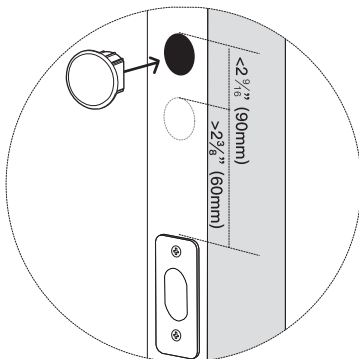


1. Determine mounting location.
2. Attach mounting tape.
3. Place on door frame.
4. Screw into frame (optional).
5. Attach the cover.
6. Calibrate your Lock.

Flush Mount



1. Remove magnet from housing
2. Attach magnet to cap
3. Determine mounting location and Drill the hole on your door frame:
 - a. more than 1" (25mm) to 1.5" (38mm) from the top edge of your deadbolt strike plate,
 - b. Requires a $\frac{1}{2}$ " (12.5mm) deep hole,
 - c. Requires a $\frac{5}{8}$ " (16mm) inch diameter hole.
4. Insert Doorsensor into the hole



FCC Statement

This equipment has been tested and found to comply with the limits for a Class B digital device, pursuant to Part 15 of the FCC Rules. These limits are designed to provide reasonable protection against harmful interference in a residential installation. This equipment generates, uses, and can radiate radio frequency energy and, if not installed and used in accordance with the instructions, may cause harmful interference to radio communication. However, there is no guarantee that interference will not occur in a particular installation. If this equipment does cause harmful interference to radio or television reception, which can be determined by turning the equipment off and on, the user is encouraged to try to correct the interference by one of the following measures:

- 1.Reorient or relocate the receiving antenna.
- 2.Increase the separation between the equipment and receiver.
- 3.Connect the equipment into an outlet on a circuit different from that to which the receiver is connected.
- 4.Consult the dealer or an experienced radio/TV technician for help.

⚠ FCC Caution: Any changes or modifications not expressly approved by the party responsible for compliance could void the user's authority to operate this equipment.This device complies with Part 15 of the FCC Rules. Operation is subject to the following two conditions: (1) This device may not cause harmful interference, and (2) this device must accept any interference received, including interference that may cause undesired operation.

FCC Radiation Exposure Statement

To comply with FCC/IC RF exposure requirements for mobile transmitting devices, this transmitter should only be used or installed at locations where there is at least 20 cm separation distance between the antenna and all persons.

Industry Canada Statement

Under Industry Canada regulations, this radio transmitter may only operate using an antenna of a type and maximum (or lesser) gain approved for the transmitter by Industry Canada. To reduce potential radio interference to other users, the antenna type and its gain should be so chosen that the equivalent isotropically radiated power (e.i.r.p.) is not more than that permitted for successful communication.

Warnings

Failure to follow the below instructions could result in damage to the product and void the factory warranty.

The accuracy of the door preparation is critical to allow proper functioning and security of this Revolo Product. Misalignment of the door prep and lock can cause performance degradation and hinder the security functions of the lock.

Finish Care: This lockset is designed to provide the highest standard of product quality and performance. Care should be taken to ensure a long-lasting finish. When cleaning is required use a soft, damp cloth. Using lacquer thinner, caustic soaps, abrasive cleaners or polishes could damage the coating and result in tarnishing.

 **IMPORTANT:** Do not install batteries until the lock is completely installed on door.

1. User Pin Codes: Can be 4-10 digits and can be set up through Revolo App.
2. Door sensor calibration: The door sensor calibration process requires you to operate in full accordance with the user's instructions. After the calibration is successful, you can experience the function of detecting the opening and closing status of the door provided by Revolo.
3. Auto-Unlock: To use the Auto-Unlock function, you need to fully understand how to use this function, and be aware of the convenience and potential risks that this function brings to you.
4. Share your device: Sharing your device means that you need to share permissions such as opening doors with your family or friends, and you need to be fully aware of the potential risks that this function may bring.